

學制及學分

國內唯一提供完整學程的水土保持教育

學士班

畢業學分 133

必修課程56學分、專業選修及外系課程49學分、通識課程28學分

入學管道：

申請入學、分發入學、繁星推薦、
特殊選才及運動績優



碩士班

畢業學分 30

必修課程3學分、畢業論文6學分、專業選修21學分

入學管道：

甄試入學、考試入學

碩士在職專班

畢業學分 30

必修課程6學分、畢業論文6學分、專業選修18學分

入學管道：

考試入學(書審及面試)

博士班

畢業學分 36

專題討論、畢業論文12學分、專業選修24學分

入學管道：

考試入學(書審及面試)



國立中興大學
水土保持學系

Department of Soil And Water Conservation

402臺中市南區興大路145號

swc@nchu.edu.tw

04-22840381



水保系



系友網



國立中興大學
水土保持學系

Department of Soil And Water Conservation



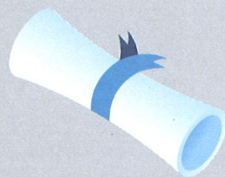
設立宗旨



本系致力於培育兼具學術研究與技術實務的專業人才，以自然災害防治與水土資源保育為核心，因應人口增長、土地利用壓力與氣候變遷帶來的挑戰。

核心領域

- 自然災害防治與管理
- 水土資源保育
- 氣候變遷調適與永續土地利用



教育特色

- 科學知識、工程技術、資訊科技之整合
- 基礎理論、應用研究與實務並重
- 強調風險評估、減災策略與韌性調適

培育目標

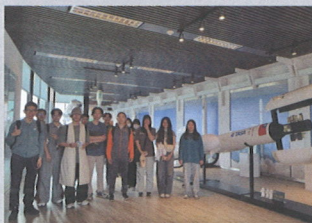
培養能因應社會急迫需求的專業人才，從資源保育到災害韌性調適，推動台灣與國際的永續發展。



▲ 水保60週年慶



▲ 水保週展



▲ 校外參訪



▲ 野外勘查

師資簡介



王咏潔 教授兼系主任

美國喬治亞理工學院土木暨環境工程博士
土壤物理與侵蝕、泥砂運動、集水區環境評估



陳樹群 終身特聘教授

國立臺灣大學土木工程學系博士
水質污染擴散模式、河相學及輸砂理論、
溪流整治工程、坡地災害防治工程



馮正一 教授

美國普渡大學土木工程博士
自然災害防治、崩塌地治理、集水區整體
調查規劃、大地工程、地球物理探測技術應用



謝平城 教授

國立臺灣大學土木工程學系博士
都市水文學、流體力學、水利工程



張光宗 教授

美國科羅拉多大學土木工程博士
水土保持工程、邊坡穩定、工程地質



詹勳全 教授

國立成功大學水利及海洋工程學系博士
明渠水力學、泥砂運動力學、水利工程



蕭宇伸 副教授

國立交通大學土木工程學系博士
大地測量、工程測量、水土保持設計規劃



宋國彰 副教授

澳洲昆士蘭大學整合生物學院博士
植生工程、物種保育、植物分布模式



吳俊毅 副教授

國立中興大學水土保持學系博士
坡地災害風險分析與評估、防災監測與管理



洪啟耀 副教授

國立臺灣大學土木工程學系博士
形貌水力、粒子流動影像分析、水保實驗設計



邱雅筑 助理教授

國立臺灣大學土木工程學系博士
岩石力學、大地工程長期監測分析及數值分析



張高華 助理教授

國立臺灣大學生物環境系統工程學系博士
無網格數值方法、計算水力學、環境風場分析



魏士超 助理教授

國立臺灣大學土木工程學系博士
土石流、減災監測、坡地災害評估



陳希軍 助理教授

德國霍恩海姆大學農學博士
農村發展、地景保育、行動者網絡分析



ACADEMIC PROGRAMS



SWC is the only department in Taiwan offering a complete program in soil and water conservation education

Undergraduate Program

Graduation requirement 133 credits

Required courses, professional electives, interdepartmental electives, and general education

ADMISSION:

Application, entrance examination, stars program recommendation, special admission, or athletic achievement admission

Master's Program

Graduation requirement 30 credits (including thesis)

ADMISSION:

Recommendation and Entrance examination

Executive Master's Program

Graduation requirement 30 credits (including thesis)

ADMISSION:

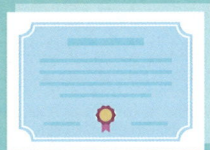
Entrance examination (document review & interview)

Doctoral Program

Graduation requirement 36 credits (including dissertation)

ADMISSION:

Entrance examination (document review & interview)



國立中興大學
水土保持學系

Department of Soil And Water Conservation

Department of Soil and Water Conservation
National Chung Hsing University

145 Xingda Rd., South Dist., Taichung City 40227, Taiwan (R.O.C.)

04-22840381 swc@nchu.edu.tw



WEBSITE



ALUMNI



國立中興大學
水土保持學系

Department of Soil And Water Conservation



MISSION



The SWC department is committed to cultivating professionals who integrate academic research with practical expertise in **natural disaster mitigation and soil and water resource conservation**, addressing challenges from population growth, intensive land use, and climate change.

Core Focus

- Natural disaster mitigation and management
- Soil and water resource conservation
- Climate change adaptation and sustainable land use



Educational Features

- Comprehensive training in science, engineering, and information technology
- Balanced curriculum of theory, applied research, and practice
- Emphasis on risk assessment, mitigation, and resilience adaptation

Goal

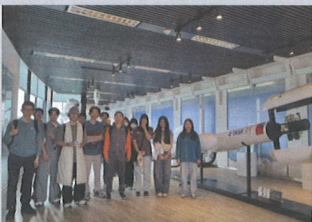
We aim to nurture experts equipped to **meet urgent societal needs**, from **conserving natural resources** to **advancing resilience adaptation**, contributing to **sustainable development** in Taiwan and beyond.



▲ SWC 60th anniversary



▲ SWC campus exhibition



▲ Educational visit



▲ Course field trip



FACULTY PROFILES



Prof. **Wang, Yung-Chieh** / Chair

Ph.D., Civil and Environmental Engineering, Georgia Institute of Technology, USA
Soil physics, soil erosion, sediment transport, watershed environmental assessment



Lifetime Distinguished Prof. **Chen, Su-Chin**

Ph.D., Civil Engineering, National Taiwan University
Water quality model, fluvial morphology, sediment transport theory, river restoration, slopeland disaster prevention



Prof. **Feng, Zheng-Yi**

Ph.D., Civil Engineering, Purdue University, USA
Natural disaster prevention, landslide mitigation, watershed investigation and planning, geotechnical engineering, geophysical survey applications



Prof. **Hsieh, Ping-Cheng**

Ph.D., Civil Engineering, National Taiwan University
Urban hydrology, fluid mechanics, hydraulic engineering



Prof. **Chang, Kuang-Tsung**

Ph.D., Civil Engineering, University of Colorado at Boulder, USA
Soil and water conservation engineering, slope stability, engineering geology



Prof. **Chan, Hsun-Chuan**

Ph.D., Hydraulics and Ocean Engineering, National Cheng Kung University
Open channel hydraulics, sediment transport dynamics, hydraulic engineering



Assoc. Prof. **Hsiao, Yu-Shen**

Ph.D., Civil Engineering, National Chiao Tung University
Geodetic surveying, engineering surveying, soil and water conservation design and planning



Assoc. Prof. **Song, Guo-Zhang**

Ph.D., School of Integrative Biology, University of Queensland, Australia
Vegetation engineering, species conservation, plant distribution modeling



Assoc. Prof. **Wu, Chun-Yi**

Ph.D., Soil and Water Conservation, National Chung Hsing University
Landslide disaster risk analysis and assessment, disaster monitoring and management



Assoc. Prof. **Hung, Chi-Yao**

Ph.D., Civil Engineering, National Taiwan University
Morphological hydraulics, particle flow image analysis, experimental design in soil and water conservation



Asst. Prof. **Chiu, Ya-Chu**

Ph.D., Civil Engineering, National Taiwan University
Rock mechanics, long-term monitoring and numerical analysis in geotechnical engineering



Asst. Prof. **Chang, Kao-Hua**

Ph.D., Bioenvironmental Systems Engineering, National Taiwan University
Mesh-free numerical methods, computational hydraulics, environmental wind field analysis



Asst. Prof. **Wei, Shih-Chao**

Ph.D., Civil Engineering, National Taiwan University
Debris flow, disaster mitigation monitoring, slope hazard assessment



Asst. Prof. **Chen, Hsi-Chun**

Ph.D., Agricultural Sciences, University of Hohenheim, Germany
Rural development, landscape conservation, actor-network analysis

